

# ALBERTA NATIVE BEE COUNCIL

AGM | Bumble Bee Box Reporting | Provincial Monitoring Program

## First AGM October 20

Registration is open for the Bee Council's first Annual General Meeting on October 20th. Space is limited and attendees must register. See details on Page 2.

## Provincial Native Bee Monitoring Program

Samples are rolling in from the provincial native bee monitoring program. Stay tuned for a schedule of work-bees, which are opportunities for volunteers to assist with processing samples collected through this program. See details on Page 2.

## Council Activity Update

- More than 600 bumble bee boxes were distributed by the Bee Council in 2018.
- The Bee Council presented at 24 public events throughout Alberta in 2018.

## Memberships

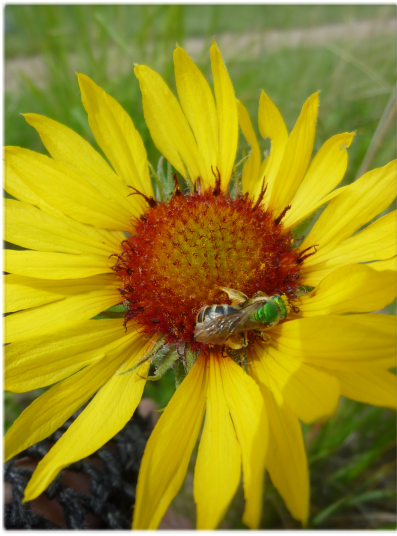
Annual Bee Council memberships will soon be available for purchase on our website or get yours at the AGM! Contact us for more info.

## It's time to report back on your bumble bee box!



If your bumble bee boxes were placed outside prior to July 1, please complete and submit the Bumble Bee Nesting Box Questionnaire. You can find the form on our website: [www.albertanativebeecouncil.ca](http://www.albertanativebeecouncil.ca); or on our Facebook page. Please return the completed questionnaire to [bbbmonitoring@albertanativebeecouncil.ca](mailto:bbbmonitoring@albertanativebeecouncil.ca).

We are also interested in collecting nest contents of colonized boxes. Simply place the contents in a ziplock bag with the date, your name, phone number and address (or bee box number if you registered it) and place the bag in a cool secure place, submit your questionnaire indicating that you'd like someone to pick it up and a Bee Council member will coordinate postage or pick-up.



## ANBC AGM Oct 20

Our first Annual General Meeting will be held on October 20th, at the Marda Loop Community Hall from 1pm - 5pm (Lower Hall - 3130 16 St. SW, Calgary, AB).

We are still confirming speaker details but plan to have 2-3 presentations followed by our Annual General Meeting. Dr. Ralph Cartar will speak about his research on bumble bee nesting boxes and other speakers will talk about native bee conservation efforts and strategies.

We are currently accepting nominations for the position of Vice-President. Email: [info@albertanativebeecouncil.ca](mailto:info@albertanativebeecouncil.ca) for more information and a nomination form.

### Space is limited and you must

**R.S.V.P.** Email

[info@albertanativebeecouncil.ca](mailto:info@albertanativebeecouncil.ca) to register or for more information.

## Provincial Native Bee Monitoring Program

Bee season has come to an end and so have our sampling efforts for native bees. The Alberta Native Bee Council partnered with Alberta Agriculture and Forestry (and other volunteers throughout the province) to sample for native bees throughout Alberta in 2018. The result, in conjunction with research conducted by the University of Calgary and Alberta Environment and Parks, will be the most robust sampling to date of native bees in Alberta in a single season.

Once compiled these data will add to the inventory of native bees in Alberta and upon repeat sampling, allow researchers to more fully understand changes in native bee populations, which will help guide conservation efforts.

### Work-Bees

Currently, the bee samples are stored at a cool temperature in liquid. These samples need to be washed, dried, sorted, pinned, labelled and databased - **that's where you come in!** We are asking for volunteers to attend work-bee sessions throughout Alberta in the winter of 2018/2019 to assist with processing of specimens. It's a great way to learn more about our native bees and to provide critical assistance with this important research. Stay tuned for a schedule of work-bees and registration details!

## Gratitude for Support

The Alberta Native Bee Council would like to express sincere gratitude for financial and in-kind support from the following organizations. We would not be able to do the work we do without it!

- Mount Royal Institute for Environmental Sustainability;
- Alberta Conservation Association;
- Alberta Agriculture and Forestry;
- Alberta Environment and Parks;
- The University of Calgary; and
- Countless individuals throughout the province who have donated their time.